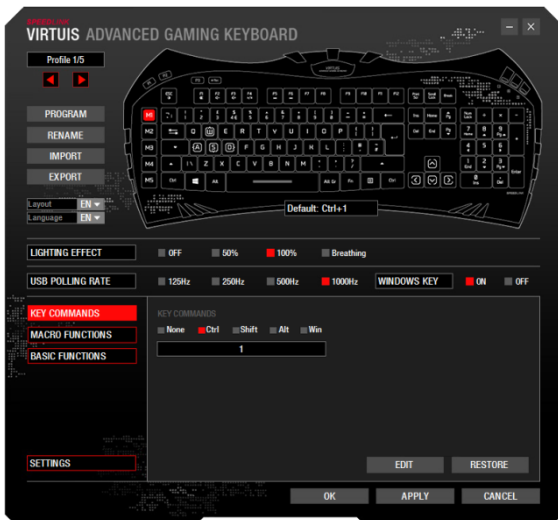
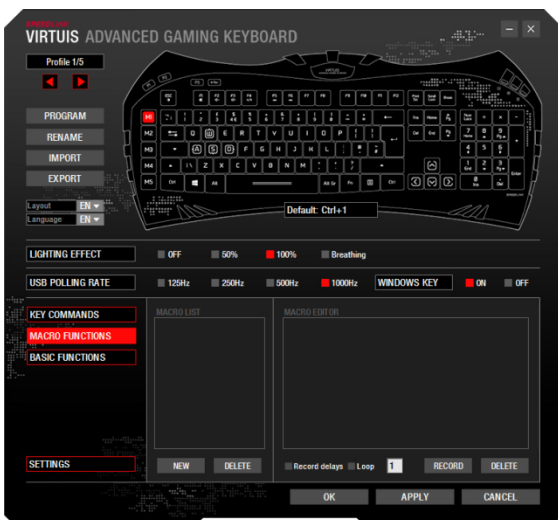


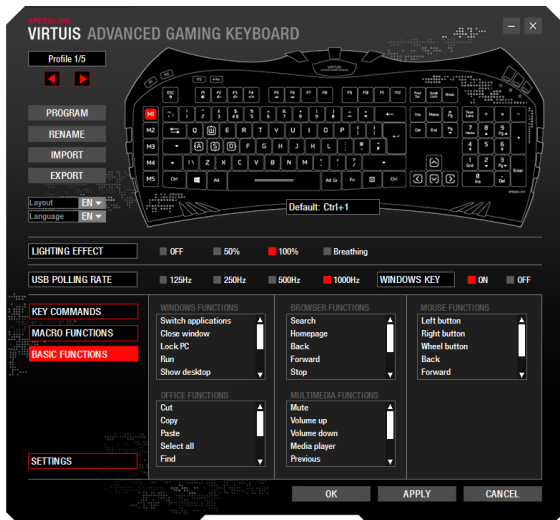
In the upper left corner you can switch between five different profiles. Below, you have the opportunity to choose a program, which when it starts, activates the respective profile. Also, you can rename, import and export the profile and change the layout and keyboard language. On the pictured keyboard, you're able to choose the button, which you want to assign with a different function. Below the keyboard you can change the light effect, the USB polling rate and lock the windows key.



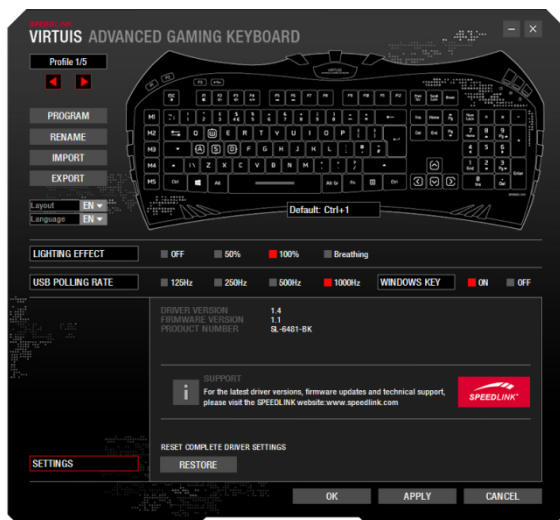
Here you can apply certain shortcuts. Just select the required command boxes and insert the button below.



Click 'NEW'. Name the macro and confirm by pressing the Enter key. Click 'RECORD' and enter your macro. The 'STOP' button replaces 'RECORD' in the meantime. Click the 'STOP' button to stop recording. Confirm by clicking 'APPLY'.



Advanced basic and mouse functions can be assigned to macro-capable buttons: Choose the desired function and confirm by clicking “APPLY”.



In the index tab “Settings” you can see the driver version, firmware and article number. Note below which refers to our support team. With the button reset you can perform a hardware reset.